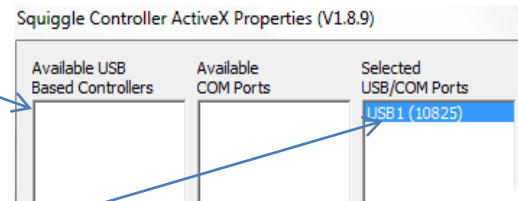


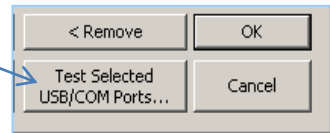
Continued from other side...

E. Your available USB ports will be displayed here.



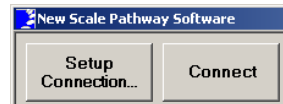
Choose a USB port and click "Select." The USB IDs you selected will appear under "Selected USB/COM Ports."

F. Click "Test Selected USB/COM Ports." Upon successful test, click "OK" and close the window.



3. Evaluate M3-RS-U operation

A. Click the "Connect" button in the New Scale Pathway software. Available modules will be listed in the motor control window.



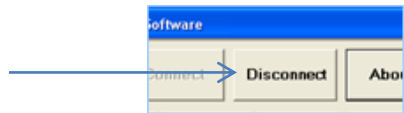
B. Briefly click the "Jog Control" reverse (REV) and forward (FWD) buttons and observe the M3-RS-U shaft rotation.



C. Position information from the position sensor will be displayed in the Motor Control tab.



D. To shut down the Developer's Kit, press the Disconnect button in the software interface **before removing the USB cable.**



4. For More Detailed Evaluation

Refer to the *M3-RS-U-360 Integration Guide* for instructions on mirror installation, module mounting and alignment..

Refer to the *New Scale Pathway™ Software Command Reference Manual* for detailed instructions on operating and programming the module.

5. Next Steps

This Developer's Kit is designed to help you evaluate the M3-RS Rotary Stage. You may purchase standard modules for production, or work with us to develop customized M3 modules tailored to your system requirements. Contact us to discuss volume pricing or custom module development.

For information and technical support call New Scale Technologies at (585) 924-4450 or email NSTsales@newscaletech.com or NSTservice@newscaletech.com

Quick Start Guide for M3-RS-U-1M-20 Developer's Kit

Your package should contain:

- One M3-RS-U Rotary Stage and straight FPC
- One M3-RS-U-Mirror-01-03, mounted to stage
- Clamp bracket and base plate
- Breakout board for testing
- Cables and USB adaptor for PC control
- New Scale Pathway™ Software



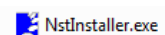
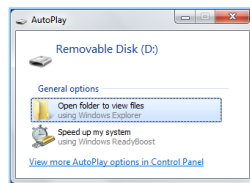
1. Install the New Scale Pathway™ software

A. Insert the New Scale Pathway™ Software USB into your Windows PC.

- On Windows XP or earlier, “auto install” will run and open the NST Installer. Proceed to (B).
- On Windows 7 or later, Autoplay will open. Select “Open folder to view files.”

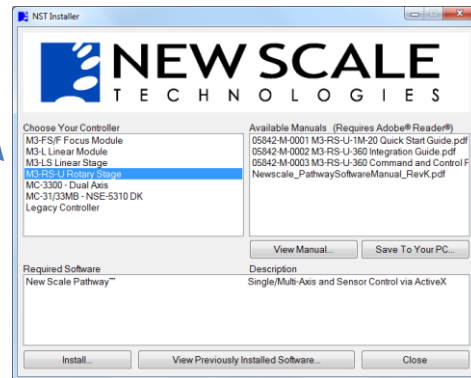
If Autoplay does not open, locate NSTinstaller.exe using Windows Explorer.

RIGHT click on “NstInstaller.exe” and select “Run as administrator” to proceed with installation.



B. Under “Choose Your Controller,” select **M3-RS-U Rotary Stage**

C. Under “Available Manuals” select documents you wish to save for later viewing and click “save to your PC.” You may also open the USB drive to view manuals any time.



Recommended reading for the M3-RS-U includes:

- Data Sheet
- Quick Start Guide
- Integration Guide
- Command Reference Manual
- New Scale Pathway™ Software Manual

D. Click “Install...” If there is an indication that a previous software version has been installed, select “Remove” to accept old software removal and installation of new software. Proceed with installation instructions.

E. Upon installation completion, a New Scale Pathway™ software icon will be placed on your desktop for future use.

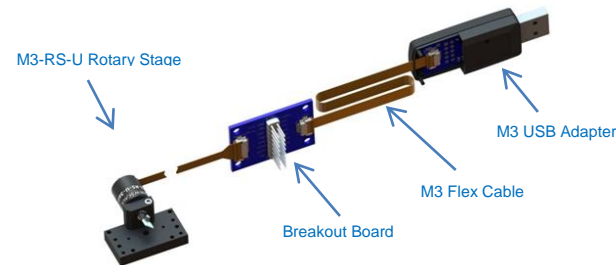


2. Connect the Developer's Kit to your PC

A. Connect the 16 trace flex cable coming out of the M3-RS-U stage to the wide connector on the breakout board. Connect the 10 trace M3 flex cable to breakout board and the USB adapter (see image blow).

The gold contact leads must face **toward the board**.

Note: the module will not run if this connection is not properly made and maintained.



B. Insert the M3 USB adapter into your PC's USB port (using the USB extension cable if desired). Power is provided through USB.

C. Double-click the New Scale Pathway icon on your desktop to start the application.



D. In the New Scale Pathway application, click “Setup Connection.”



Your available USB ports will be displayed...

Continued on other side...