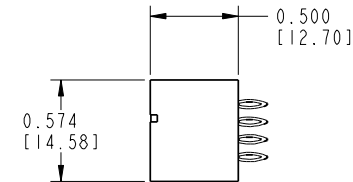
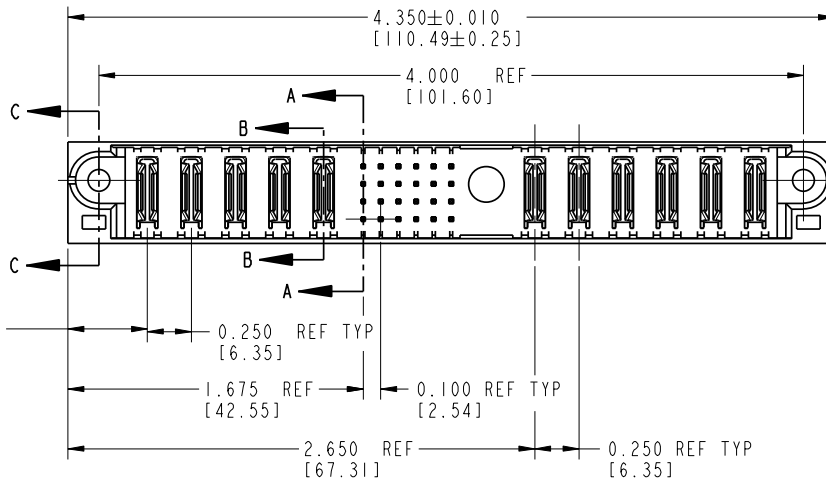
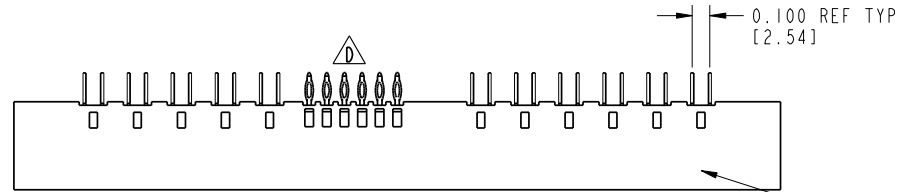


Tous droits strictement réservés. Reproduction ou communication o des liens interdite sous quelque forme que ce soit sans autorisation écrite du propriétaire. Propriete de c FCI. Drois de reproduction FCI.



All rights strictly reserved. Reproduction or issue to third parties in any form whatever is not permitted without written authority from the proprietor. Property of FCI. Copyright FCI.

| PRODUCT No. | ROWS | POWER | | | | | SIGNAL | | | | | | POWER | | | | | | | | |
|------------------------|------------------|-------|----|----|----|----|--------|---|---|---|---|---|-------|----|----|----|----|----|-----|-----|----|
| | | E1 | P1 | P2 | P3 | P4 | P5 | 1 | 2 | 3 | 4 | 5 | 6 | MI | P6 | P7 | P8 | P9 | P10 | P11 | E2 |
| 51860-002-- NOTE: 3 | D C B A | | PC | PC | PC | PC | PC | G | G | G | G | G | G | | PC | PC | PC | PC | PC | PC | |



| CODE | DIM "M" ±.010 [0.25] | CONTACT TYPE |
|------|-------------------------|--------------|
| G | 0.270 [6.86] | SIGNAL |
| K | 0.220 [5.59] | SIGNAL |
| PC | [N/A] [N/A] | POWER |

| | | | | | | | | | | | | | |
|-------------|----------------|-----|----------|------------|------------------------|---------------------------------------|----------------|-----------|--|--------|------|--------------------|--|
| mat'l code | | | | SEE NOTE 1 | | tolerances unless otherwise specified | | CUSTOMER | | FCI | | www.fciconnect.com | |
| ltr | ecn no. | dr | date | linear | .XX±.01/0.X±0.3 | projection | COPY | | title 5P + 24S + 1M + 6P VERTICAL PRESS-FIT HEADER | | | | |
| A | V12513 | DA1 | 10/31/01 | | .XXX±.005/0.XX±0.13 | INCH/MM | product family | | PWRBLADE | | code | | |
| B | V21104 | TAB | 09/30/02 | angles | .XXX±.0020/0.XXX±0.051 | | size | | dwg no | | 213 | | |
| C | DG05-0572 | JMG | 01/05/06 | | 0°±2° | scale | | A | | 1 of 3 | | | |
| D | DG07-0357 | JC | 03/26/08 | dr | J. WITMER 10/3/01 | 1:1 | | 51860-002 | | | | | |
| | | | | enr | J. ALLISON 10/3/01 | | | | | | | | |
| | | | | chr | J. ALLISON 10/3/01 | | | | | | | | |
| | | | | appd | J. ALLISON 10/3/01 | | | | | | | | |
| sheet index | revision sheet | D | D | D | | | | | | | | | |
| | | 1 | 2 | 3 | | | | | | | | | |

cage code 22526

Pro/E

PDM: Rev:D

STATUS: Released

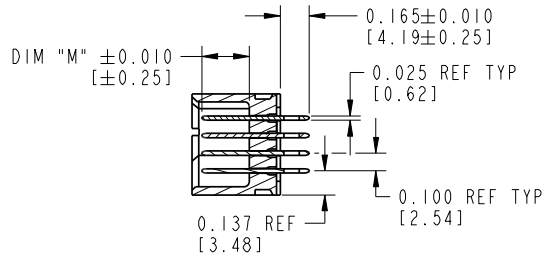
Printed: Dec 20, 2010

Tous droits strictement réservés. Reproduction ou communication o des tiers interdite sous quelque forme que ce soit sans autorisation écrite du propriétaire. Propriété de c FCI. Droits de reproduction FCI.

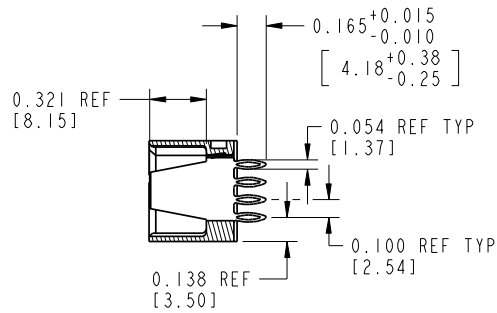


All rights strictly reserved. Reproduction or issue to third parties in any form whatever is not permitted without written authority from the proprietor. Property of FCI. Copyright FCI.

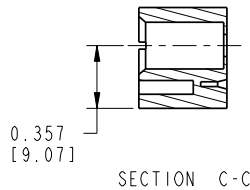
PRODUCT NUMBER
51860-002__
NOTE: 2



SECTION A-A



SECTION B-B



SECTION C-C

CONNECTOR NOTES:

- HOUSING MATERIAL: UL 94 V-0 GLASS FILLED HIGH TEMP THERMOPLASTIC
POWER CONTACT MATERIAL: COPPER ALLOY
SIGNAL CONTACT MATERIAL: COPPER ALLOY
- PLATING:
SEE PRINT 10064183 FOR PLATING SPEC OF 51860-002; 51860-002LF
- "MANUFACTURER'S" NAME, P/N, AND DATE CODE TO APPEAR ON THIS SURFACE
- PRODUCT SPECIFICATION GS-12-149

PCB NOTES:

- ALL DIMENSIONS ARE BASIC UNLESS OTHERWISE SPECIFIED.
- ALL THROUGH HOLES ARE LOCATED WITH A TRUE POSITION OF 0.004 [0.10]
- ALL HOLE DIAMETERS ARE FINISHED HOLE SIZE
- Ø0.098[2.41] THROUGH HOLES ARE UNPLATED.
- Ø0.0453±0.0010 [1.151±0.025] DRILLED HOLES PLATED WITH 0.0003 [0.008] MIN SnPb OVER 0.001 [0.03] TO 0.003 [0.08] Cu PLATING TO ACHIEVE A Ø0.040±0.003 [1.02±0.07] HOLE.
- FOR PRESS FIT APPLICATION USE FCI CAM TOOL 430169-XXX.
- DIMENSIONS AND TOLERANCES ARE IN ACCORDANCE WITH ASME Y14.5M, 1994 UNLESS OTHERWISE SPECIFIED.
- A Δ SYMBOL WILL BE NEXT TO ANY DIMENSION, VIEW, OR NOTE WHICH HAS BEEN MODIFIED WITH THE CURRENT DRAWING REVISION.

| | | | | | | | | | | | |
|-------------|----------------|------------|------|---------------------------------------|-----------------------|----------|--|----------------|--|---------------------------|--|
| mat'l code | | SEE NOTE 1 | | tolerances unless otherwise specified | | CUSTOMER | | FCI | | www.fciconnect.com | |
| lfr | ecn no. | dr | date | linear | .XX±.01/0.X±0.3 | COPY | | projection | | title 5P + 24S + 1M + 6P | |
| d | | | | angles | .XXX±.005/0.XX±0.13 | INCH/MM | | product family | | VERTICAL PRESS-FIT HEADER | |
| | | | | dr | .XXX±.0020/0.XX±0.051 | scale | | PWRBLADE | | code | |
| | | | | engr | 0°±2° | 1:1 | | size | | 213 | |
| | | | | chr | J. WITMER 10/3/01 | | | A | | sheet | |
| | | | | appd | J. ALLISON 10/3/01 | | | 51860-002 | | 2 | |
| sheet index | revision sheet | | | | | | | | | | |

cage code 22526

Pro/E

PDM: Rev:D

STATUS: Released

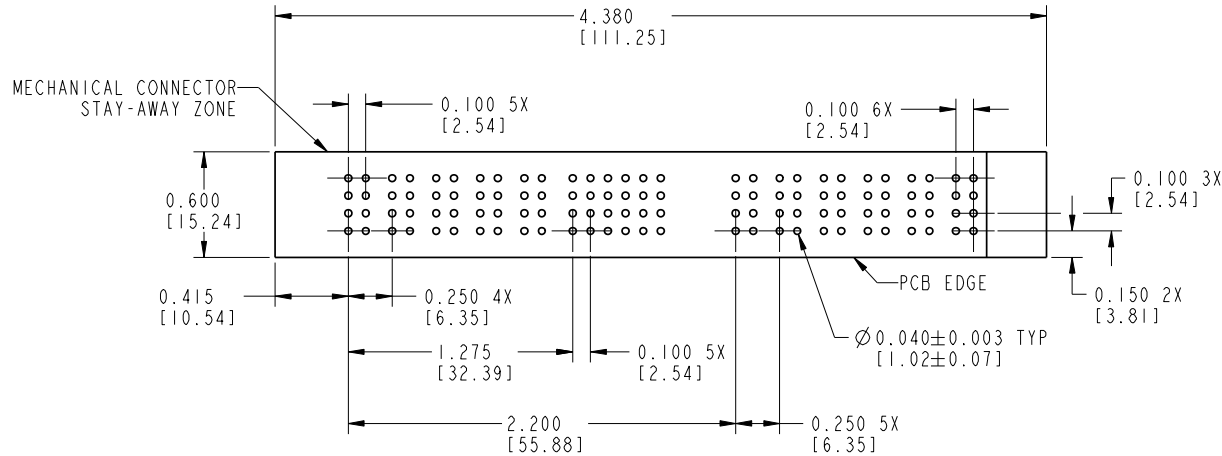
Printed: Dec 20, 2010

Tous droits strictement réservés. Reproduction ou communication o des tiers interdite sous quelque forme que ce soit sans autorisation écrite du propriétaire. Propriété de c FCI. Droits de reproduction FCI.



All rights strictly reserved. Reproduction or issue to third parties in any form whatever is not permitted without written authority from the proprietor. Property of FCI. Copyright FCI.

PRODUCT NUMBER
51860-002__
NOTE: 3



RECOMMENDED PCB LAYOUT

| | | | | | | | | | | | |
|-------------|----------------|------------|------|---------------------------------------|------------------------|----------|--|----------------|--|--------------------------|--|
| mat'l code | | SEE NOTE 1 | | tolerances unless otherwise specified | | CUSTOMER | | FCI | | www.fciconnect.com | |
| ltr | ecn no. | dr | date | linear | .XX±.01/0.X±0.3 | COPY | | projection | | title 5P + 24S + 1M + 6P | |
| d | | | | angles | .XXX±.005/0.XX±0.13 | INCH/MM | | product family | | code | |
| | | | | dr | .XXX±.0020/0.XXX±0.051 | scale | | PWRBLADE | | 213 | |
| | | | | engr | 0°±2° | 1:1 | | size | | sheet | |
| | | | | chr | J. WITMER 10/3/01 | | | A | | 3 | |
| | | | | appd | J. ALLISON 10/3/01 | | | 51860-002 | | | |
| sheet index | revision sheet | | | | | | | | | | |

cage code 22526

Pro/E

PDM: Rev:D

STATUS: Released

Printed: Dec 20, 2010