



## 1 Verify your components

The Digi™ XBee® ZigBee® Cloud Kit allows you to set up your XBee Gateway, development board and XBee module, and configure the XBee Gateway web interface through your Wi-Fi network. You can then see sensor data from your hardware kit on the web page and send data from the web to your device.

## Quick Start Guide

### XBee ZigBee Cloud Kit



90001398-88 C



XBee Gateway  
Ethernet + Wi-Fi model

### Included equipment



Ethernet cable

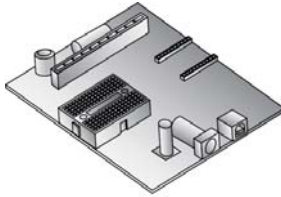


Power supply



Loose components

### Included equipment continued



Development board



Battery holder



USB cable



XBee module

### Required additional equipment



A personal computer

## 2 Write down the serial numbers

Write down the serial number located on the back of your XBee Gateway and XBee RF module. You will use these serial numbers later when accessing the gateway and adding the devices to Digi Device Cloud. Some digits of the serial number are the same for all models and are pre-filled below.

XBee Gateway serial number:  
00409D\_\_\_\_\_



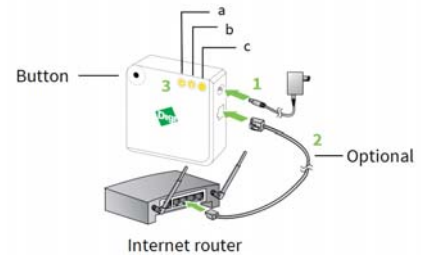
XBee RF module:  
0013A200\_\_\_\_\_



## 3 Connect the hardware

### Connect XBee Gateway hardware

1. Connect the power supply.
2. Optional: If you are using an Ethernet network connection in addition to Wi-Fi, connect one end of the



Ethernet cable to your gateway and the other to a live Ethernet jack.

3. The startup sequence after power is applied is as follows:

- a. The **Power** LED turns solid green.



- b. The **XBee** LED turns blinking green when XBee Gateway creates a ZigBee network.

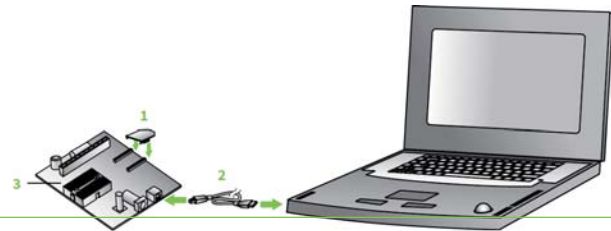


- c. The **Network** LED gradually turns solid green when XBee Gateway connects to Digi Device Cloud.



### Connect XBee module and development board hardware

- Place the XBee module onto the development board, seating the pins on the connectors noted on the diagram.
- Connect one end of the USB cable to the development board and the other end to your computer.
- Startup Sequence**—Locate the **Associate** LED on the development board. The **Associate** LED blinks green when the XBee module joins a ZigBee network.



**Note** For more information on LED states, see the [XBee ZigBee Cloud Kit Getting Started Guide](#).

## 4 Connect XBee Gateway to the network

### Connect to a Wi-Fi network

- Check with your network administrator on the Wi-Fi security mode and associated parameters for your network, including any passphrase or key used to connect to your Wi-Fi access point.

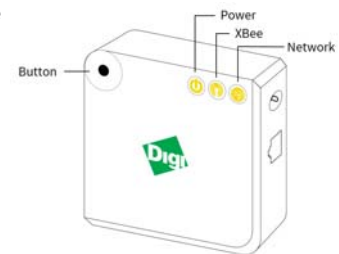
SSID: \_\_\_\_\_

Security mode: \_\_\_\_\_

Passphrase or key: \_\_\_\_\_

Other parameters: \_\_\_\_\_

- Press the button on your XBee Gateway once to enable Access Point mode. This Access Point mode is active for **five minutes**.
- From the list of Wi-Fi network connections on your computer, connect your computer to the Wi-Fi network named **xbgw-xx:xx:xx:xx:xx:xx**, where **xx:xx:xx:xx:xx:xx** is the serial number of the gateway.
- Once you are connected to the Wi-Fi network, open a web browser and enter the URL of XBee Gateway: **http://192.168.100.1**. This will open the XBee Gateway web interface.
- From the XBee Gateway web interface, go to **Configuration > Wireless Network**.
- On the **Wireless Network Configuration** page, click **Run Wizard** and follow the prompts to configure your device. See the *XBee Gateway User Guide* for more information.
- Restore the Wi-Fi network on your computer to its previous connection.



### Connect to an Ethernet network

Your XBee Gateway automatically connects to the Ethernet network, when a DHCP server is available to assign an IP address to it and no firewalls block outgoing traffic to ports **3197** and **3199**. If the Ethernet network does not come up, see "Troubleshoot your XBee ZigBee Cloud Kit" in the *XBee ZigBee Cloud Kit Getting Started Guide*.

## 5 Next steps

**Quick setup, advanced configuration, and more:** To get details on all XBee ZigBee Cloud Kit features and learn how to configure your XBee ZigBee Cloud Kit to suit your site requirements, see the *XBee ZigBee Cloud Kit Getting Started Guide*.

**Regulatory Information and certificates for XBee Gateway:** Go to [http://www.digi.com/resources/documentation/Digidocs/html/XBee\\_Gateway Ug.htm](http://www.digi.com/resources/documentation/Digidocs/html/XBee_Gateway Ug.htm).

**Digi Technical Support:** Digi offers multiple technical support plans and service packages to help our customers get the most out of their Digi product. For information on Technical Support plans and pricing, contact us at 877.912.3444 or visit us at [www.digi.com/support](http://www.digi.com/support).