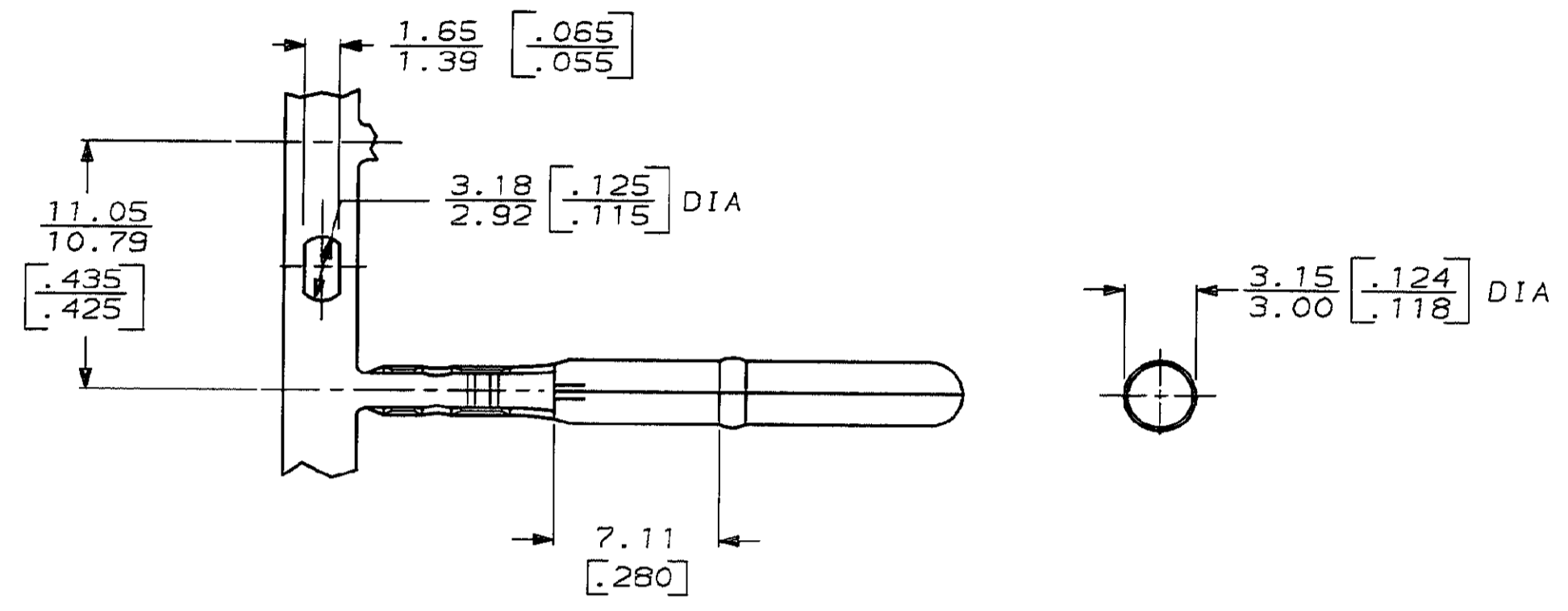
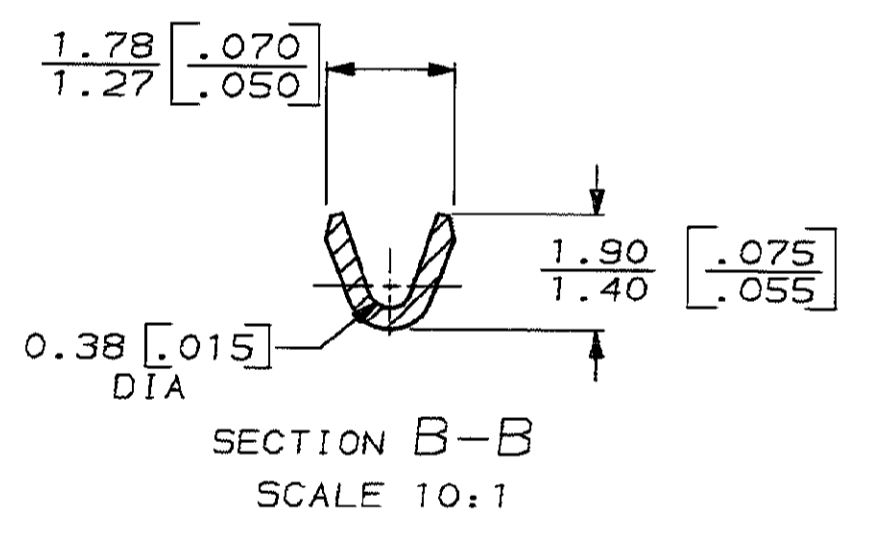
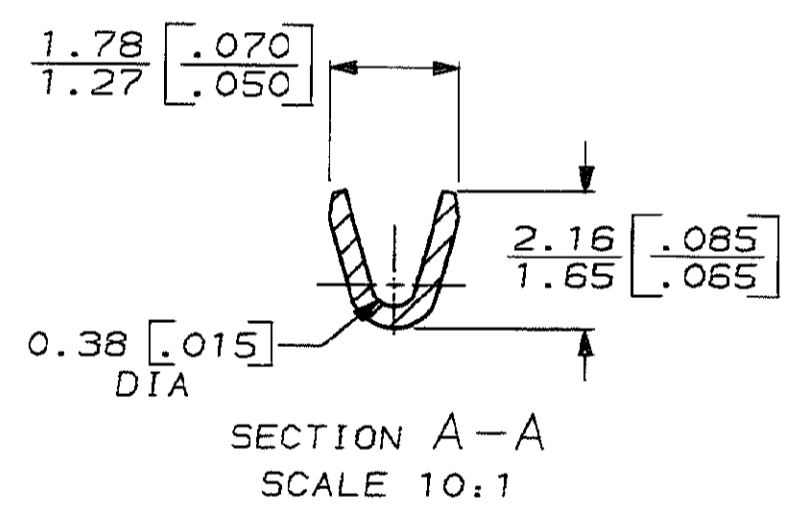
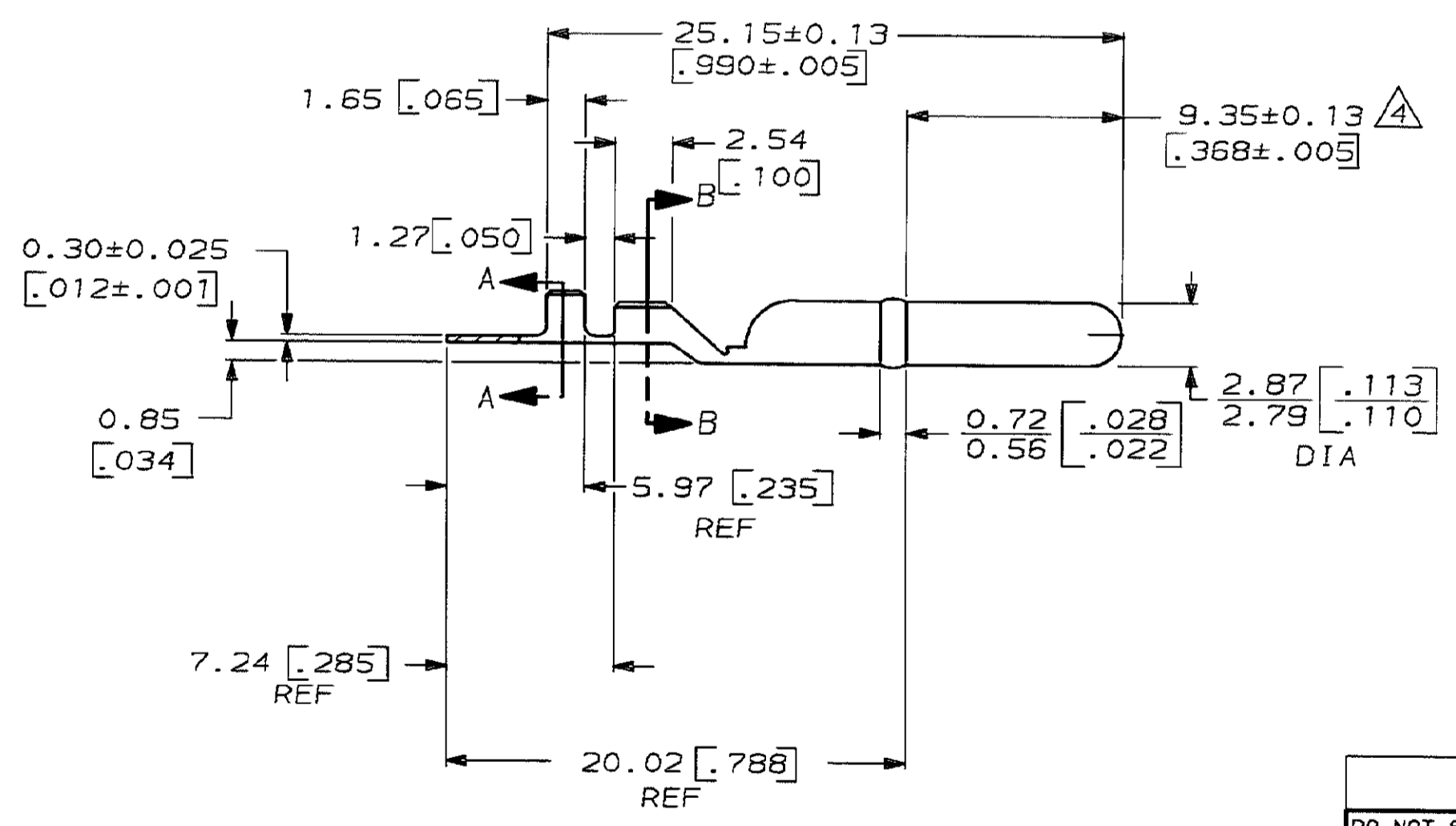


LOC	DIST	P	F	ZONE	LTR	REVISIONS	DATE	APPD
AF	50					DESCRIPTION		
					E	REV PER 0190-93	6/22/93	PF/GY



- 1 CONTINUOUS STRIP ON REELS
- 2 DIMENSIONS IN BRACKETS ARE IN INCHES
- 3 SEAM OPENING TO BE 0.076 [.003] MAX OVER ENTIRE LENGTH OF PIN
- 4 2.79-2.87 [.110-.113] DIA APPLIES OVER THIS LENGTH
- 5 PARTS MUST MEET 90° BEND TOWARDS SEAM ON MATING PIN SIDE OF 0.72 [.028] / 0.56 [.022] BEAD WITHOUT COMPLETELY BREAKING OFF



METRIC					
F	1.07	3.56	F	1.07	.81 [.032]
	[.042]	[.140]		[.042]	.13 [.005]
					.72 [.030]
					.74 [.028]
					.05 [.002]
TYPE	WIDTH	STRIP LENGTH ±.015	TYPE	WIDTH	HEIGHT
INSUL BARREL CRIMP			WIRE BARREL CRIMP		WIRE

1.15-0.63 [.045-.025]		0.05-0.12mm <sup>2</sup> [30-26]		63493-1	
INSULATION RANGE			WIRE SIZE		PART NO
DO NOT SCALE PRINT. UNLESS SPECIFIED DIMENSIONS IN INCHES TOLERANCES ON : 2 PLC DEC ± - 3 PLC DEC ± 0.25 [.010] ANGLES ± -			DR 6/6/88 P FORTNEY		<b>AMP</b>   AMP INCORPORATED Harrisburg, Pa. 17105  NAME  .112 DIA PIN
MATERIAL			CHK 6/9/88 MS FEHER		
#2 HARD BRASS			APPD 6/9/88 D DECKER		
FINISH			APPD 6/9/88 TL SHUTTER		
PRE-TIN			PRODUCT SPEC		
			APPLICATION SPEC		SIZE
			WEIGHT		FSCM NO
					DRAWING NO
					63493
					SCALE 4:1
					SHEET 1 OF 1