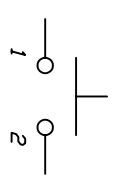
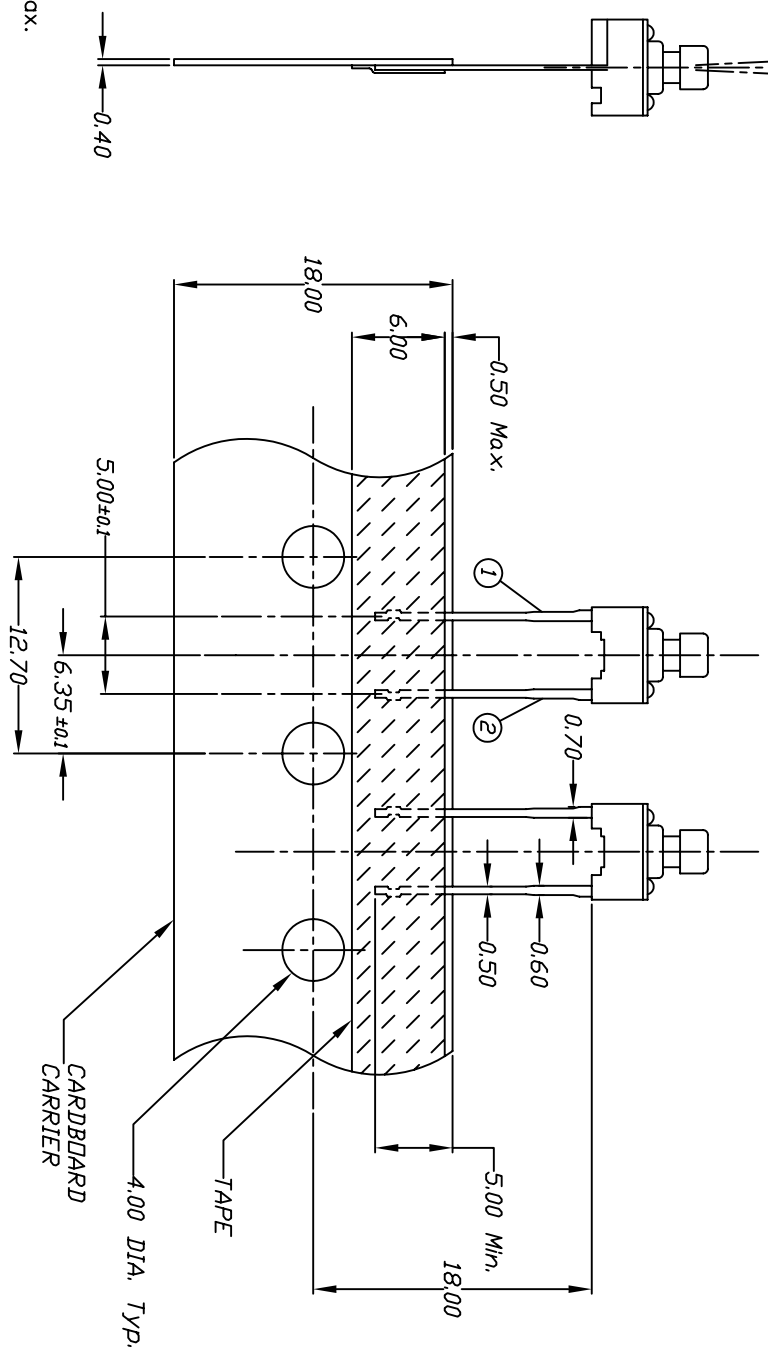


RECOMMEND P.C.B. LAYOUT



CIRCUIT: SPST

CONTACT CONFIGURATION



NOTES:

1. ALL DIMENSIONS IN MM [INCH]
2. GENERAL TOLERANCE: X.X=±0.4
X.XX=±0.25
3. CONTACT RATING: 50mA @12V DC
- ▲4. CONTACT MATERIAL: SILVER
- ▲5. OPERATING FORCE: 160±50gf
6. TRAVEL: 0.25 +0.2/-0.1
7. CONTACT RESISTANCE: 100MILLI OHMS max.
8. ELECTRICAL LIFE: 100,000 CYCLES
9. PACKAGING:
CARRIER IS FOLDED EVERY 25 PITCHES
(24) SWITCHES PER FOLD
(1,000) SWITCHES PER BOX
10. 2002/95/EC (ROHS) COMPLIANT
11. ▲ DENOTES MAJOR DIMENSION.

| | | | | |
|--|-------|-------------------------------|--------|------|
| B | 16833 | DIM .30 TD .25, UPDATED NOTES | 1/5/07 | TN |
| A | -- | RELEASED FOR PRODUCTION | | |
| REV. | PCR | DESCRIPTION | DATE | CHKD |
| THE INFORMATION CONTAINED IN THIS DOCUMENT IS PROPRIETARY TO E-SWITCH AND IS NOT TO BE COPIED OR TRANSFERRED | | | | |

| TOLERANCES | |
|------------|-------|
| 0.0 | ±0.4 |
| 0.00 | ±0.25 |

| | | | | | | |
|-------------|--|-------|----------|----|---------|-----|
| TITLE | | SCALE | DATE | DR | DWG | REV |
| TL59SPF160Q | | 2:1 | 1/5/2007 | TN | P010585 | B |
| E-SWITCH® | | | | | | |