



Quick Start Guide

TSL2591EVM

TSL2591 Light-To-Digital High Sensitivity Ambient Light Sensor

Version 1.1





Table of Contents

1	Out of the box.....	3
2	Software installation.....	3
3	Connect Hardware.....	4
4	Start Application.....	4
5	Contact and Support.....	5



1 Out of the box

Each TSL2591 EVM comes with the following components:

Controller board v2.1

- TSL2591 Daughterboard
- EVM Controller 2.1a (or newer)
- USB Cable with A connector and mini B connector
- Flash Drive with Application Software and Documents



2 Software installation

Most PCs should have one or more Universal Serial Bus (USB) ports. Install the **ams** flash drive into an unused USB port.

1. Double-click the Setup.exe file on the flash drive, or
2. Click Start -> Click Run -> Type E: setup.exe and press Enter. IMPORTANT: Use the appropriate drive letter in the above command to install the software. Flash Drive will commonly be assigned the next available drive letter for example C: hard drive D: CD-ROM E: flash drive



The Digital Light Sensor Setup Wizard will open and guide you through the installation of the TSL2591 host software. (Figures 2 through 8). To re-install, run the setup.exe file again. To remove the software from your computer, Select **ams** -> TSL2591 EVM -> Uninstall TSL2591 EVM or use the Windows Control Panel (Figure 9).

3 Connect Hardware

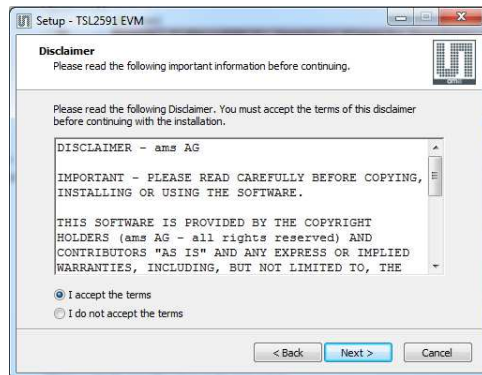
Plug the TSL2591 Daughterboard into the Controller board. (Figure 1) Always use ESD procedures when handling the EVM. Using the enclosed USB cable, plug the mini-B connector into the EVM module. Using the other end of the cable, plug the USB A connector into a USB port on the computer.

4 Start Application

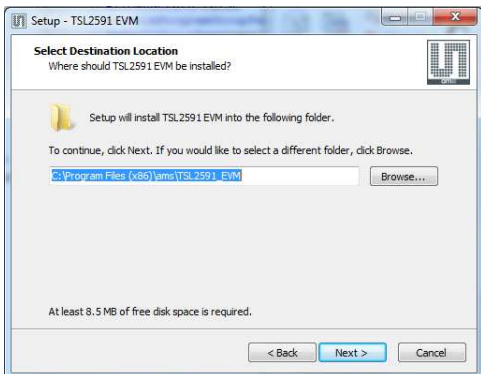
Click the digital Light Sensors icon on the desktop



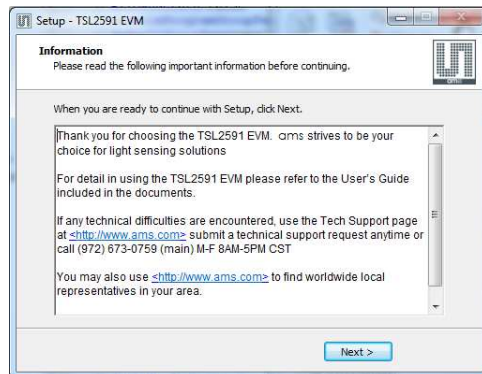
Welcome Screen



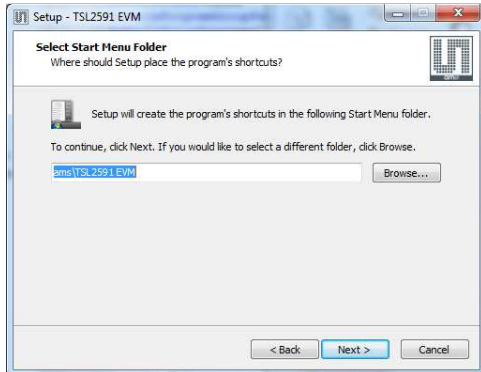
Liability Disclaimer



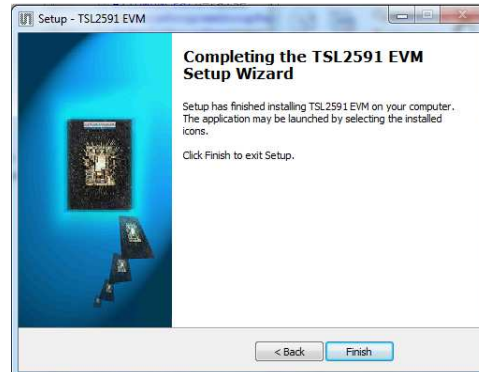
Select Installation Folder



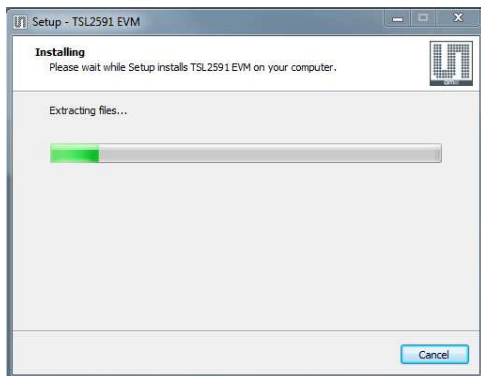
Thank you Screen



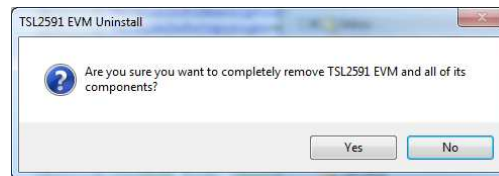
Select Start Menu Folder



Installation Completely Successfully



Installation in Progress



Remove Installation

5 Contact and Support

For detail in using the TSL2591 EVM please refer to the User's Guide included in the documents.

If any technical difficulties are encountered, use the Tech Support page at

<http://www.ams.com/Support> to submit a technical support request anytime or call (972) 673-0759

(main) M-F 8AM-5PM CST You may also use <http://www.ams.com> to find worldwide local representatives in your area.