

Dialight

PWM SERIES LINEAR MODULES



FEATURES / BENEFITS

- ▲ Fully modular linear arrays of ultra high brightness LEDs
- ▲ Utilizes the latest 100+ lumen LUXEON® Rebel™ LEDs for cool white, 100+ lumen for neutral white & 50+ lumen for warm white
- ▲ Choice of colour temperatures & optical patterns
- ▲ >70% lumen maintenance @ 60,000 hours at max acceptable ambient temperature
- ▲ ETL recognized
- ▲ Lifesaver® thermal protection
- ▲ Primary heatsinking included

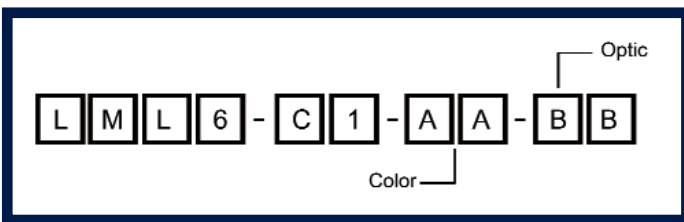
OPERATING CONDITIONS

- ▲ Operating ambient temperature -30°C to +55°C (@350mA)
- ▲ Requires constant current driver
- ▲ Compatible drivers include Dialight Lumidrives PWD60-35-70
Runs 3-8 modules @ 350mA, 2-4 modules @700mA
- ▲ Additional heatsinking required when driven @ 700mA

APPLICATION

- ▲ Linear lighting
- ▲ Accent lighting
- ▲ Flood lighting
- ▲ Street & area lighting
- ▲ General illumination

ORDERING INFORMATION



MATERIALS / FINISH

- ▲ Six premium flux LUXEON Rebel LEDs per module
- ▲ Anodized cast aluminum heatsink
- ▲ Polycarbonate cover
- ▲ Dialight-Lumidrives optics (OPC 11 Series)
- ▲ Modular quick connect cables
- ▲ Module to module connector cable included

Typical Colour (AA) Temperature

CW = 5000K - 6350K
NW = 3800K - 4100K
WW = 2850K - 3250K

Optic (BB)

SP = 5 degree spot
MD = 8 degree med.
WD = 20 degree wide
OV = 5X25 degree oval
FR = 7 degree frosted spot

Connectors (sold separately)

LML6-CON-CAB =
Entry cable, driver to 1st module
LML6-TER-CAB =
End plug (required)

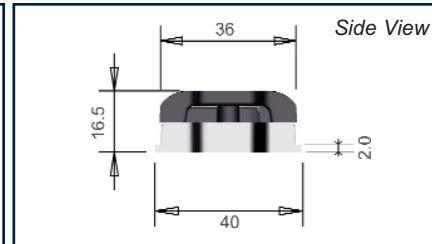
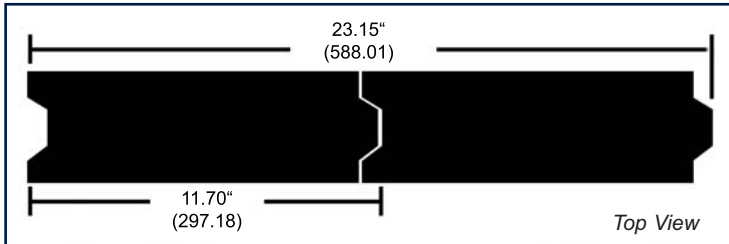
* Cables use 0.5mm² AWG12 wires

MECHANICAL DIMENSIONS

11.7" x 1.498" x 0.585"
(297.18mm x 38.05mm x 14.86mm)

Mounting hole spacing = 3.22" (81.8mm)
Max screw size #8

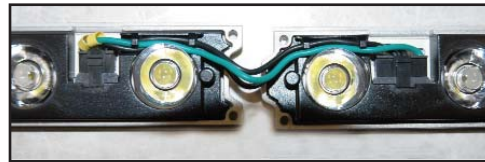
Total length for "Z" units connected end to end =
(Z x 11.7) - ((Z-1) x 0.25) (inches)
(Z x 297.2) - ((Z-1) x 6.35) (mm)



Example: 2 units total length = 23.15" (588.01)

Dimensions in mm

ASSEMBLY INFORMATION



1) Position 'tab' end of first powerwhite module by input wires/driver. (**Do not connect power to entry cable before completing steps 2-6**)

2) Remove cover from module (**Do not remove mask**). Modules may be screwed down onto surface by inserting two M6 or 8/32 flathead screws through screw holes.

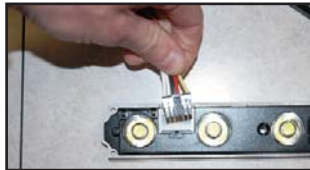
3) Insert 6 pin prong from LML6-CON-CAB entry cable into 6 prong receptacle near tab end of first module.

4) Insert 4 pin prong from connector cable into 'notch' end of module, insert 6 pin prong from connector cable into 'tab' end of next module (repeat for each additional module).

5) Connector cable wires can be routed through interior of modules by placing them into interior wire holders.

6) Insert LML6-TER-CAB 4-pin terminal prong into 'notch' end of last module in run (required).

7) Replace covers and connect power to LM60-CON-CAB



INPUT WIRE CHART

| Colour wire on A50-LML6-CON-CAB entry cable | To. or | Connect to on PWD60-35-70 |
|---------------------------------------------|------------|-----------------------------------|
| White 1 | Thermistor | Wire 5 |
| White 2 | Thermistor | Wire 6 |
| Red | Driver + | Wire 2 350mA Wires 1 & 2 700mA |
| Black | Driver - | Wire 3 |
| Green | Ground | Green / Yellow Stripe |

PHOTOMETRIC DATA

TBD
IES 32 files available, consult factory

Dialight reserves the right to make changes at any time in order to supply the best product possible.

The most current version of this document will always be available at:

www.dialight.com/Assets/Brochures_And_Catalogs/Illumination/MDEXLUMPWM.pdf

MDEXLUMPWM_B