

SPECIFICATIONS

FITS:

LSU Series With 7.0mm x 5.6mm Plunger Styles
 U Series With 7.0mm x 5.6mm Plunger Styles

MINIMUM ACTUATOR HEIGHT:
 5.0mm

APPROVALS:

RoHS
 COMPLIANT

MATERIALS

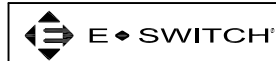
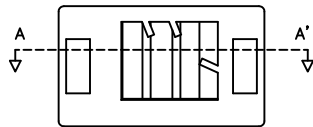
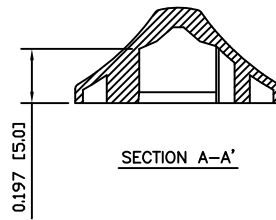
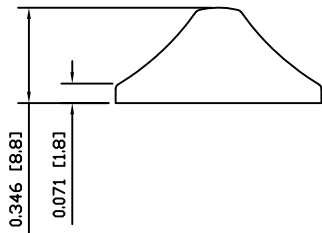
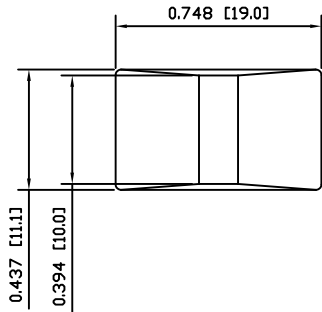
CAP:

Acrylonitrile Butadiene Styrene (ABS)
 (Toray 100), UL94 HB

COLORS

CAP:

Black



ACC-C23-2

DIMENSIONS
 INCHES [MILLIMETERS]
GENERAL TOLERANCES
 ±0.008 [±0.2] / ±1'

SCALE
 DRAWING NOT TO SCALE



DRAWING NUMBER
 03-ACCC232

DATE
 NOVEMBER 6, 2009

REVISION
 A

THE INFORMATION CONTAINED IN THIS DOCUMENT IS PROPRIETARY TO E-SWITCH AND IS NOT TO BE COPIED OR TRANSFERRED

A	INITIAL RELEASE	PCRD0198	09/11/06	CAB
REV.	DESCRIPTION	PCR	DATE	DRAWN BY