

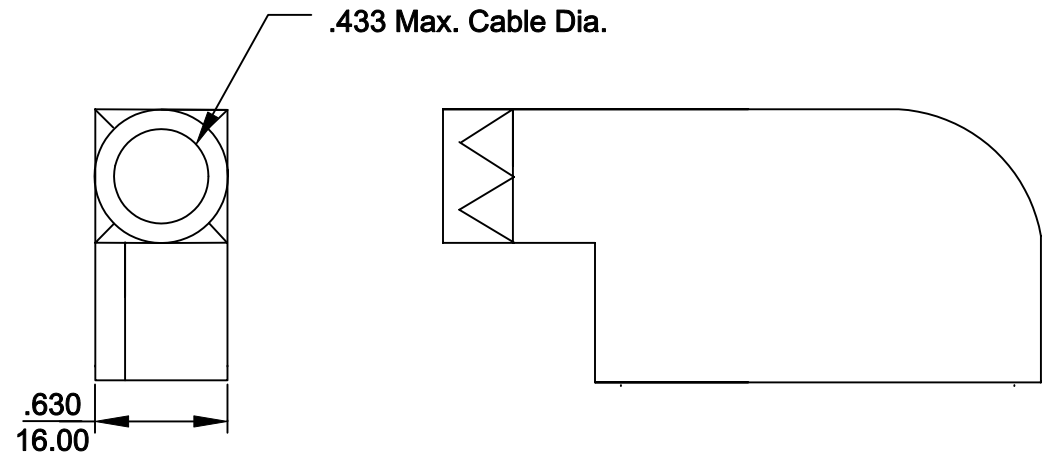
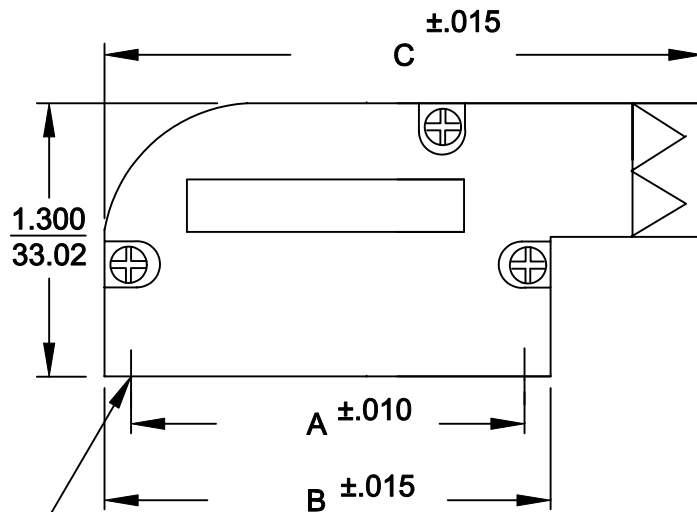
DESCRIPTION: **981 SERIES R/A BACKSHELL**

981-XXX-XXXRXX1

**BACKSHELL KIT INCLUDES:**

- (2) BACKSHELL HALVES
- (3) HOUSING SCREWS
- (1) GROMMET TREE  
(NON-CONDUCTIVE GROMMETS)

SERIES \_\_\_\_\_  
 POSITIONS \_\_\_\_\_  
 009  
 015  
 025  
 MATERIAL \_\_\_\_\_  
 030 = ZINC  
 COLOR: \_\_\_\_\_  
 12 = NICKEL OVER COPPER  
 PUT-UPS \_\_\_\_\_  
 1 = KIT



4-40 INTERNAL THREADS

SIZE	A	B	C
9	.984	1.240	1.850
15	1.312	1.555	2.323
25	1.852	2.106	2.835

**MATERIAL: DIE-CAST ZINC ALLOY**  
**NICKEL PLATED**  
**RoHS COMPLIANT**

	THESE DRAWINGS AND SPECIFICATIONS ARE THE PROPERTY OF NorComp AND SHALL NOT BE REPRODUCED, COPIED OR USED AS THE BASIS FOR THE MANUFACTURE OR SALE OF APPARATUS WITHOUT WRITTEN PERMISSION.		DRAWN: <b>PAM JENKINS</b>	DATE: <b>7-28-05</b>
			CHECKED:	DATE:
<h1>NorComp</h1>			SCALE	SHEET OF
			REV <b>1</b>	
			DWG NO.	<b>981-0XX-030R121</b>