

PART NUMBER	REV	FIRST USED	TERMINATOR	FEED TYPE	DESCRIPTION
1426114-1	B	-	LEADMAKER	MECH POST FEED	CUTS CARRIER
1426114-2	B	-	BENCH	MECH PRE FEED	CUTS CARRIER
1426114-6	B	-	LEADMAKER	MECH POST FEED	CONTINUOUS CARRIER
7-1426114-1	B	-	LEADMAKER	MECH POST FEED	-1 AND SPARE PARTS
7-1426114-2	B	-	BENCH	MECH PRE FEED	-2 AND SPARE PARTS
7-1426114-6	B	-	LEADMAKER	MECH POST FEED	-6 AND SPARE PARTS
7-1426114-7	A	-	-	-	SPARE PARTS KIT

CRIMP DATA ITT CANNON TERMINAL

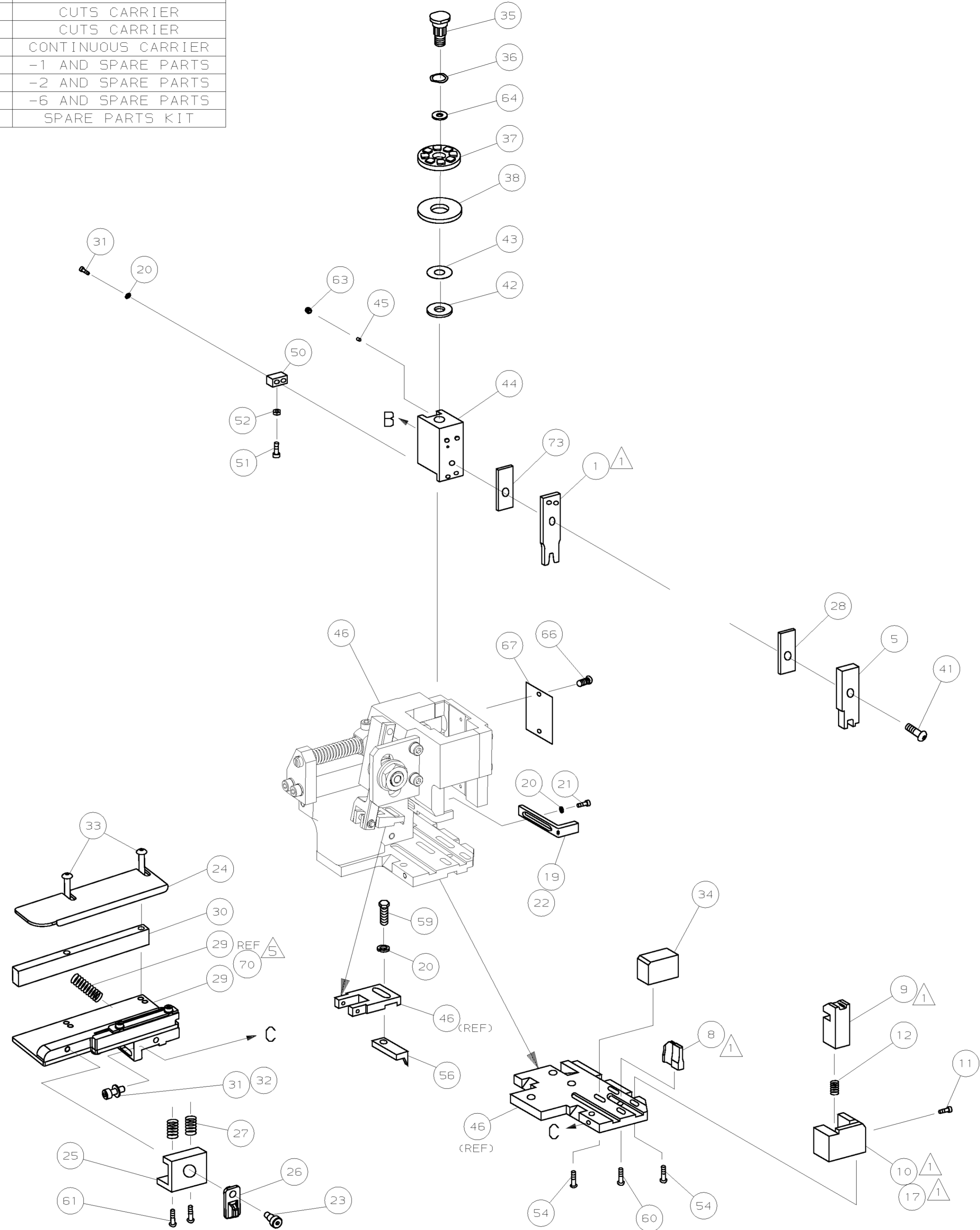
CRIMP	SIZE	TYPE	RANGE
WIRE	0.56 [.022 IN]	F	26 - 30 AWG
INSUL	-	-	-
WIRE STRIP LENGTH	APPL INSTRUCTION		
2.40-2.80 [.095-.110 IN]	408-8322		

TERMINAL	FEED
APPL SPEC 114-3118	5.00 [.197 IN]

TERMINALS APPLIED

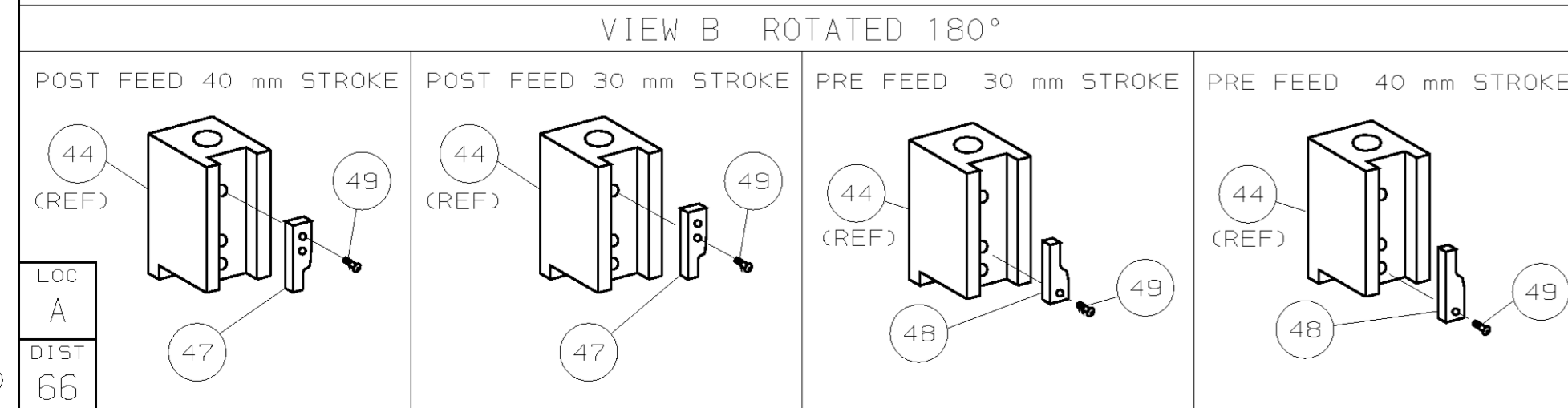
AMP PN	MFR PN	-	-	-
286904-1	MDS-5-RL	-	-	-
-	-	-	-	-
-	-	-	-	-
-	-	-	-	-
-	-	-	-	-
-	-	-	-	-
-	-	-	-	-
-	-	-	-	-
-	-	-	-	-
-	-	-	-	-

WIRE SIZE	CRIMP HEIGHT	PIN PN & LENGTH [IN]
mm <sup>2</sup> AWG		
26 AWG	0.52 ±0.02 [.020 ±.0008 IN]	354779-6 [.3020]
28 AWG	0.47 ±0.01 [.018 ±.0004 IN]	1-354779-0 [.3040]
30 AWG	0.42 ±0.02 [.016 ±.0008 IN]	1-354779-4 [.3060]
-	-	-
-	-	-
-	-	-
-	-	-
-	-	-
-	-	-
-	-	-



-	1	1	1	1	1	1	455888-8	CRIMPER SPACER	73
-	1	1	1	1	1	1	1426114	PRINT, APPLICATOR LOG SHEET	72
-	1	1	1	1	1	1	1338705-1	DOCUMENTATION PACKAGE	71
-	1	1	1	1	1	1	1333241-1	TRACK, RAIL, FRONT, SPECIAL	70
-	-	-	-	-	-	-	-	-	69
-	-	-	-	-	-	-	-	-	68
-	1	1	1	1	1	1	461264-1	PLATE, IDENTIFICATION	67
-	2	2	2	2	2	2	21017-2	SCR, DRIVE (#2x.19) ID PLATE	66
-	-	-	-	-	-	-	-	-	65
-	1	1	1	1	1	1	986950-1	WASHER, FLAT PRECISION	64
-	1	1	1	1	1	1	3-18031-0	SCR, SKT SET (M6X6) RAM	63
-	-	-	-	-	-	-	-	-	62
-	2	2	2	2	2	2	1-18024-5	SCR, BHC (M5X25) DRAG	61
-	1	1	1	1	1	1	18024-7	SCR, BHC (M4X10) ANVIL	60
-	1	1	1	1	1	1	5-18022-2	SCR, HEX (M4X8) FEED FINGER	59
-	-	-	-	-	-	-	-	-	58
-	-	-	-	-	-	-	-	-	57
-	1	1	1	1	1	1	1338685-1	PAWL, FEED	56
-	-	-	-	-	-	-	-	-	55
-	4	4	4	4	4	4	18024-8	SCR, BHC (M4X12) SHEAR HOLDER	54
-	-	-	-	-	-	-	-	-	53
-	1	1	1	1	1	1	18030-1	NUT, HEX (M3) HOLD DOWN	52
-	1	1	1	1	1	1	811242-5	BUMPER, HOLDDOWN	51
-	1	1	1	1	1	1	690753-2	SPACER, TONKER	50
-	1	1	1	1	1	1	18024-3	SCR, BHC (M3X10) CAM	49
-	-	-	-	-	-	-	-	-	48
-	1	1	1	1	1	1	1338675-1	CAM, PRE FEED 30 & 40 mm ST	48
-	1	1	1	1	1	1	1338676-1	CAM, POST FEED 30 & 40 mm ST	47
-	1	1	1	1	1	1	1320999-3	APPLICATOR BASIC SUBASSY	46
-	1	1	1	1	1	1	690191-1	PLUG, NYLON	45
-	1	1	1	1	1	1	1338660-1	RAM	44
-	1	1	1	1	1	1	690125-1	WASHER, LAMINATED	43
-	1	1	1	1	1	1	1-690124-1	WASHER, RAM	42
-	1	1	1	1	1	1	2-18024-6	SCR, BHC (M8X25) RAM	41
-	-	-	-	-	-	-	-	-	40
-	-	-	-	-	-	-	-	-	39
-	1	1	1	1	1	1	690223-2	SPACER, INSULATION DISC	38
-	1	1	1	1	1	1	354777-1	WIRE DISC, PLASTIC	37
-	1	1	1	1	1	1	22480-5	WASHER, SPRING	36
-	1	1	1	1	1	1	690212-1	POST, RAM	35
-	1	1	1	1	1	1	1320934-1	SUPPORT, TERMINAL	34
-	2	2	2	2	2	2	1-18024-0	SCR, BHC (M4X20) STRIP GUIDE	33
-	1	1	1	1	1	1	18027-2	WASHER, FLAT (M4)	32
-	3	3	3	3	3	3	1-18023-2	SCR, SKT CAP (M4X12) MOUNT BLOCK	31
-	1	1	1	1	1	1	1320908-5	SPACER, STRIP GUIDE	30
-	1	1	1	1	1	1	1633073-1	STRIP GUIDE PLATE ASSY	29
-	1	1	1	1	1	1	455888-1	SPACER, FRONT SHEAR DEP	28
-	2	2	2	2	2	2	1-22284-0	SPRING, DRAG	27
-	1	1	1	1	1	1	356835-1	LEVER, DRAG RELEASE	26
-	1	1	1	1	1	1	240792-1	DRAG, TERMINAL	25
-	1	1	1	1	1	1	1320928-1	PLATE, STRIP GUIDE	24
-	1	1	1	1	1	1	980371-4	SCR, SHC SHLD	23
-	1	1	1	1	1	1	690472-2	STRIPPER	22
-	1	1	1	1	1	1	1-18023-1	SCR, SHC (M4X10) STRIPPER	21
-	4	4	4	4	4	4	18025-2	WASHER, LOCK (M4) STRIPPER	20
-	1	1	1	1	1	1	1-690472-9	STRIPPER	19
-	-	-	-	-	-	-	-	-	18
-	1	-	-	1	-	-	1338684-1	HOLDER, SHEAR, FRONT (NO-CUT)	17
-	-	-	-	-	-	-	-	-	16
-	-	-	-	-	-	-	-	-	15
-	-	-	-	-	-	-	-	-	14
-	1	1	1	1	1	1	5-22280-0	SPRING, SHEAR	13
-	1	1	1	1	1	1	356885-4	STOP, SHEAR	12
-	-	1	1	-	1	1	1320921-1	HOLDER, SHEAR, FRONT (CUT)	11
-	1	1	1	1	1	1	462006-1	SHEAR, FLOAT (FRONT)	9
-	1	2	2	2	1	1	1333227-3	ANVIL	8
-	-	-	-	-	-	-	-	-	7
-	-	-	-	-	-	-	-	-	6
-	1	1	1	1	1	1	2-455889-0	DEPRESSOR, SHEAR (FRONT)	5
-	-	-	-	-	-	-	-	-	4
-	-	-	-	-	-	-	-	-	3
-	-	-	-	-	-	-	-	-	2
1	2	2	2	1	1	1	6-568176-5	CRIMPER, WIRE	1

RECOMMENDED SPARE PARTS.  
 2. GREASE RAM, CAM, CAM FOLLOWER AND FEED ROD LIGHTLY.  
 3. LUBRICATE DAILY PER THE APPLICATOR INSTRUCTION SHEET SUPPLIED WITH THE APPLICATOR.  
 PULL OFF FORCES 26AWG = 22N MIN  
 28AWG = 14N MIN  
 EXCHANGE TRACK, RAIL, FRONT PART NO. 1320931-1 FOR PART NO. 1333241-1 (ITEM 70).



1426114

THIS DRAWING IS A CONTROLLED DOCUMENT.

LAYOUT L1426114

RELEASING FOR PUBLICATION 2000

THIS DRAWING IS UNRELEASED. BY AMP INCORPORATED. ALL RIGHTS RESERVED.

LOC A

DST 66

REV	DATE	DESCRIPTION	APP	DATE
B	SEE EC 0150-0784-03	CMR	JUL03	
A	SEE ECN 015A-0009-01	LL	JAN01	
	REVISION RECORD	APP	DATE	

DIMENSIONS: mm (INCHES)	MATL	HT TR	FIN
DO NOT SCALE PRINT.	-	-	-
TOLERANCES UNLESS OTHERWISE SPECIFIED:			
1 PLC DEC ±0.5 (±0.02 IN)			
2 PLC DEC ±			
3 PLC DEC ±			
ANGLES ±			
SURF TEXTURE: <input checked="" type="checkbox"/>			
REMOVE BURRS, BREAK SHARP EDGES R0.38 MAX			

DR	APP	CHK	REL	APP	REL	DATE	DESCRIPTION
M. CLIFFORD	20N0V00	F. BACKHURST	20N0V00	REL	05JAN01	L. LOFTHOUSE	

NAME	MACHINE REF
SIDE FEED HD-I APPLICATOR	HD-I APPL
SCALE	SHEET REV
D	1 OF 1 B
DWG NO 1426114	REV B

RESTRICTED TO: