

OMRON announces the release of its new

EE-SX1320/1321/1330/4320 Photomicrosensors.

This expansion of Omron's optical sensor lineup features the addition of a 2-3 mm slot width surface mount photomicrosensors. These models come with soldering joints on the component itself, saving customer's time and money during their assembly process. Surface mount components reduce the board space required, which can allow for more robust circuit designs and mounting on either side of PCBs. Omron will offer varying output types with both a Phototransistor (-1320/1321/1330) and Photo IC (-4320). Customers also have a choice in having a dual channel output for applications that need to detect changes in movement direction.



KEY FEATURES & BENEFITS:

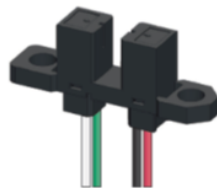
- **Expanded lineup of SMD**- 2-3 mm slot width, Photo IC output type, and Dual Channel Type
- **Customer production time reduced**- solder work load can be reduced since SMD can be mounted by reflow soldering

APPLICATIONS:

- Smart meter
- Smart thermostat
- Amusement equipment
- Vending machine
- Sewing machine
- Label printer

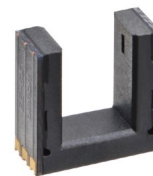
OTHER PHOTOMICROSENSORS:

EE-SX Prewire



General purpose, horizontal aperture, wide slot and dust-proof types

EE-SX1350/3350/4350



5 mm slot surface mount model