



PRODUCT NUMBER
20020623-XXXXXXLF

20020623-□ □ □ □ A 0 □ L F

PITCH

U : 10.16 mm

POLES

02 : 2 POLES
03 : 3 POLES
04 : 4 POLES

08 : 08 POLES

LF : DENOTED RoHS COMPATIBLE

1 : STANDARD PRODUCT
W/ BOX PACKING

HOUSING CODE

CODE	COLOR	AVAILABILITY
1	GREEN(RAL 6018/T)	STANDARD
2	BLACK	ON REQUEST ONLY
3	GREY(RAL 7004/P)	ON REQUEST ONLY
4	BLUE(RAL 5015/A)	ON REQUEST ONLY

PROPERTY TABLE	
FCI SERIES NAME	29-1016
PITCH (mm)	10.16
VOLTAGE RATING (VAC)	300
CURRENT RATING (A)	55
WITHSTANDING VOLTAGE (kV)	1.6
OPERATING TEMP. (°C)	-40~+115
SOLDERING TEMP. (°C)	250±10 (5 sec.)
POLES AVAILABLE	02~08
SAFETY CERTIFICATE	

NOTES:

1. MATERIALS

1-1 HOUSING: THERMALPLASTIC RESIN, UL 94V-0 RATED.

1-2 TERMINAL: COPPER ALLOY, GOLD PLATED.

2. PRODUCTION SPECIFICATION REFER TO FCI GS-12-625.

3. BOXED PACKAGING.

DETAILED PRODUCT PACKING SPECIFICATION REFER TO FCI GS-14-1394.

4. FCI, SAFETY CERTIFICATE LOGO AND SERIES NAME TO BE SHOWN ON PRODUCT SURFACE.

5. THE PRODUCTS WHERE THE PART NUMBER END IN "LF" MEET THE EUROPEAN UNION DIRECTIVE AND OTHER COUNTRY REGULATIONS AS DESCRIBED IN GS-22-008.

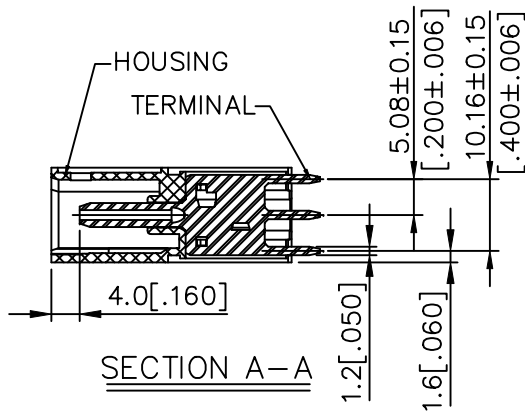
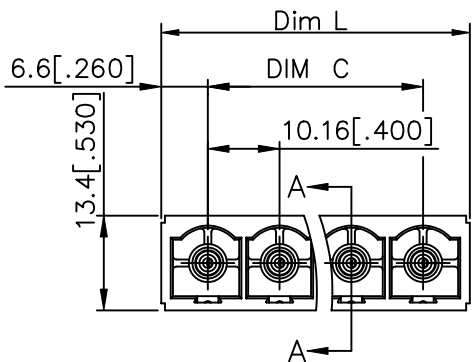
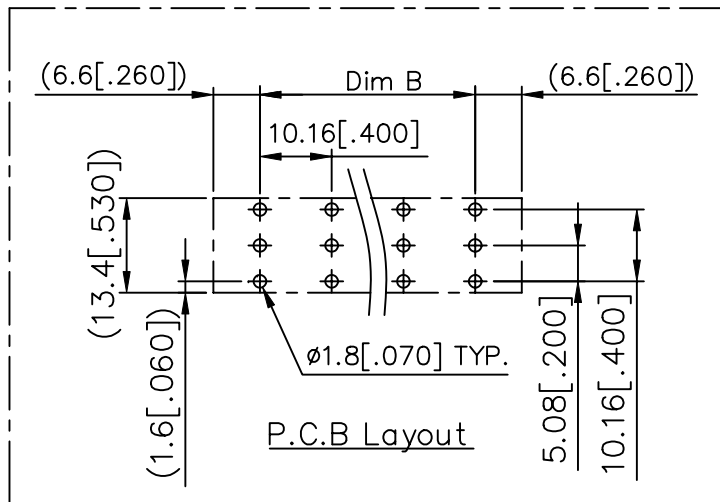
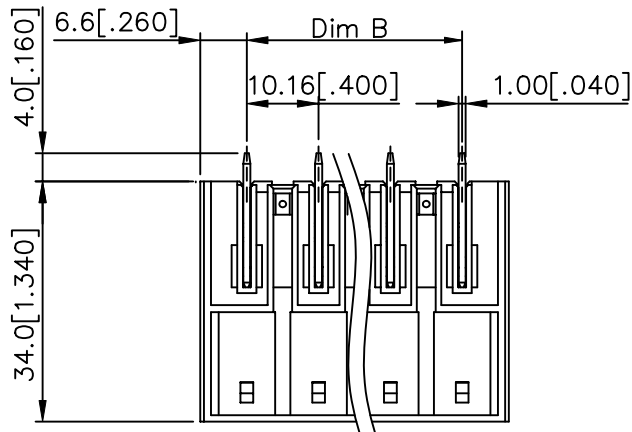
6. RECOMENDED SOLDERING PROCESS BY WAVE SOLDER.

mat'l. code		surface ASME Y14.5 ✓		tolerance ASME Y14.5		projection 		product family TERMINAL BLOCK	
ltr		ecn no		dr		date		title	
A		T10-0160		WL		101210		TERMINAL BLOCK	
B		T10-0187		WL		121410		PLUGGABLE SOCKET, POWER, STRAIGHT	
C		T-005285		WL		082311		20020623	
sheet index		revision sheet		C		C		type CUSTOMER Drawing	
		1		2					





PRODUCT NUMBER	SERIES NAME	PITCH
20020623-UXXXXXLF	29-1016	10.16 mm



DIMENSION:

Dim L	$N \times 10.16 [.400] + 3.04 [.120]$
Dim B	$(N-1) \times 10.16 [.400]$
Dim C	$(N-1) \times 10.16 [.400]$

N=Number of contacts

Poles	Tolerance
2p-3p	$\pm 0.15 [.006]$
4p-6p	$\pm 0.25 [.010]$
7p-8p	$\pm 0.35 [.014]$

mat'l. code		surface ASME Y14.5 ✓	tolerance ASME Y14.5	projection 	product family TERMINAL BLOCK
ltr	ecn no	dr	date	title TERMINAL BLOCK PLUGGABLE SOCKET, POWER, STRAIGHT	
c	angles		$X \pm 0.5$	MM [INCH]	dwg no 20020623
	inlet		$X.X \pm 0.3$		
	X°±1'		$X.XX \pm 0.1$	scale	sheet 2 of 2 size A4
	dr	WENDY CHEN	093010		type CUSTOMER Drawing
	enr	JASON HSU	093010		
	chr	JASON HSU	093010		
	appd	JASON HSU	093010		
sheet index	revision sheet				

A

5

B