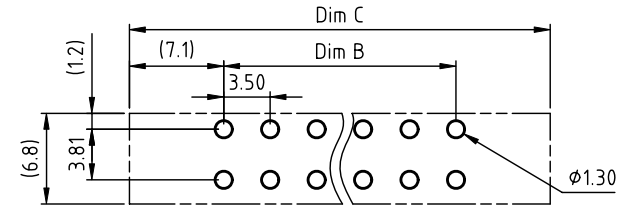
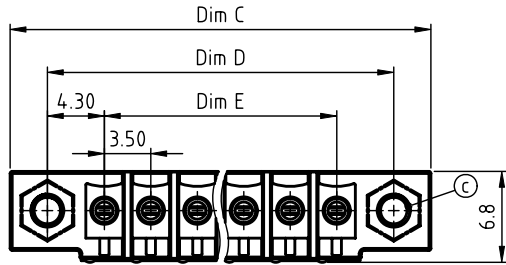
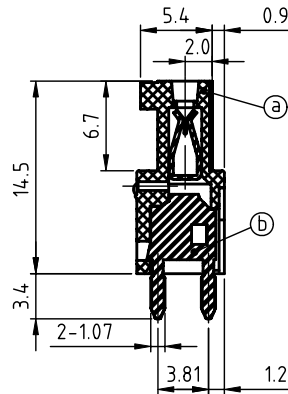
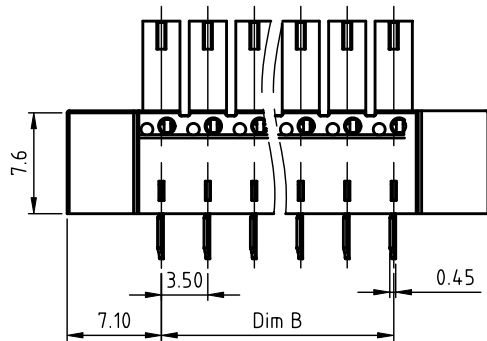


PRODUCT NUMBER	PITCH
V7xx12x000J0G	3.50 mm



RECOMMENDED P.C.B LAYOUT
TOP VIEW



- Material:
- Item @ Terminal body: Thermoplastic (UL94V-0)
 - Item Ⓓ Female contact: PhBz(CuSn), Tin plated
 - Item Ⓒ With Flange Nut :Brass M2.5
- Electrical cULus
- Voltage rating: 300V AC
 - Current rating: 4A
 - Withstanding Voltage: 1.6kv
 - Operating temperature: -40°C to +115°C
 - Soldering temperature: 260°C±5°C/5 Sec
 - Safety Approval:

N = Number of poles
 Dim B=(N-1)×3.5
 Dim C=(N-1)×3.5+14.2
 Dim D=(N-1)×3.5+8.6
 Dim E=(N-1)×3.5

poles	Tolerance
2-5p	±0.10
6-10p	±0.15
11-15p	±0.20
16-20p	±0.25
21-24p	±0.30

PART NO.: V7 xx 12 x 0 00J0 G

Solid block	No. of poles	Color	RoHS compliant (lead<4%) In copper Alloy
0	2	Black (RAL9005)	
02	3	Red (RAL3001/D)	
03	4	Orange(RAL2011/P)	
...	5	Yellow(RAL1018/A)	
...	6	Green(RAL6018/T)	
24	8	Blue (RAL5015/A)	
	9	Grey(RAL7035/D)	
	9	White(RAL1102)	
	C	Green(RAL6018/U)	

mat'l. code		surface ASME Y14.5	tolerance ASME Y14.5	projection 	product family TERMINAL BLOCK
ltr	ecn no	dr	date		title TERMINAL BLOCK
				MM	PLUGGABLE PCB PLUG, WITH FLANGE, VERTICAL
				scale	dwg no V7xx12x000J0G
					sheet 1 of 1 size A4
					type CUSTOMER Drawing
sheet index	revision	A			
	sheet	1			