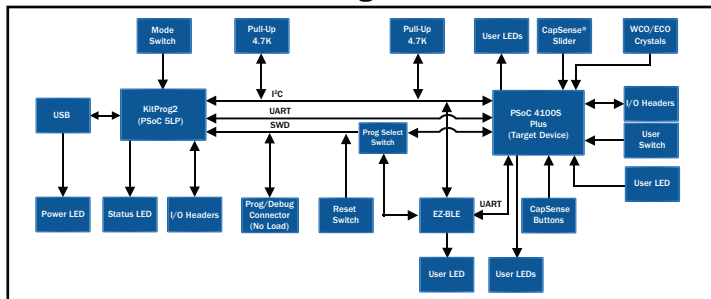


CY8CKIT-149 PSoc® 4100S PLUS PROTOTYPING KIT QUICK START GUIDE

Block Diagram



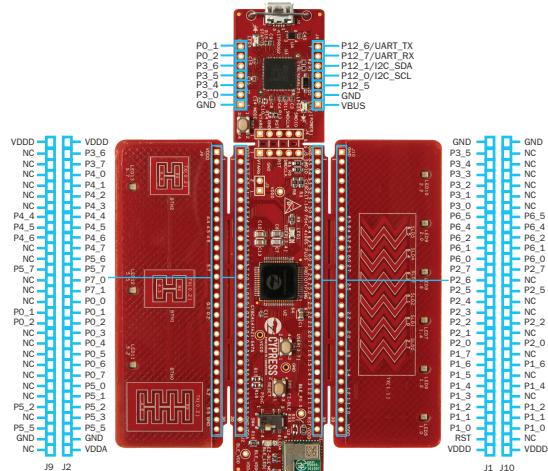
- 1) Power PSoc 4100S Plus by plugging a USB 2.0 Type-A to Micro-B Cable on J8 (USB Micro-B connector).
- 2) Touch CapSense buttons. Corresponding LEDs will turn ON.
- 3) Touch CapSense Slider. LEDs up to the relative position will turn ON.
- 4) Touching CapSense buttons and slider for about 2 sec will auto-reset the sensor, turning off LEDs.
- 5) User LED will display breathing effect.

KitProg2 Mode Switching

KitProg2 Programming Modes*	Status LED (LED3)
KitProg2 program/debug mode (PPCOM mode) (default)	ON
CMSIS-DAP & Mass Storage programming mode	OFF

*Note: Toggling between programming modes can be done by pressing mode switch SW3.

Pinout Description



For more information, please visit: www.cypress.com/CY8CKIT-149

Design the way you think!



Cypress Semiconductor CY8CKIT-149 PSoC® 4100S Plus Prototyping Kit



Contents under the label